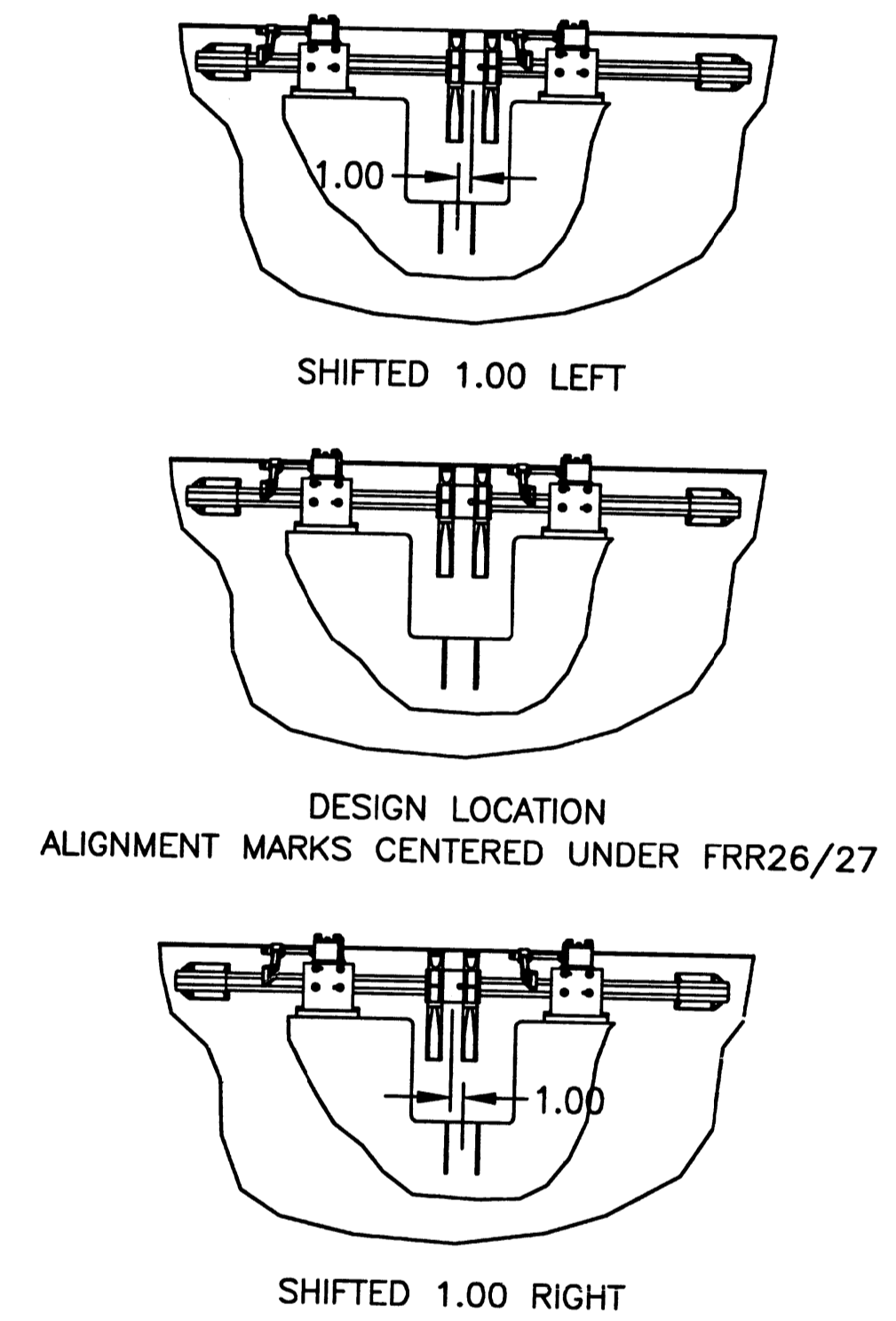
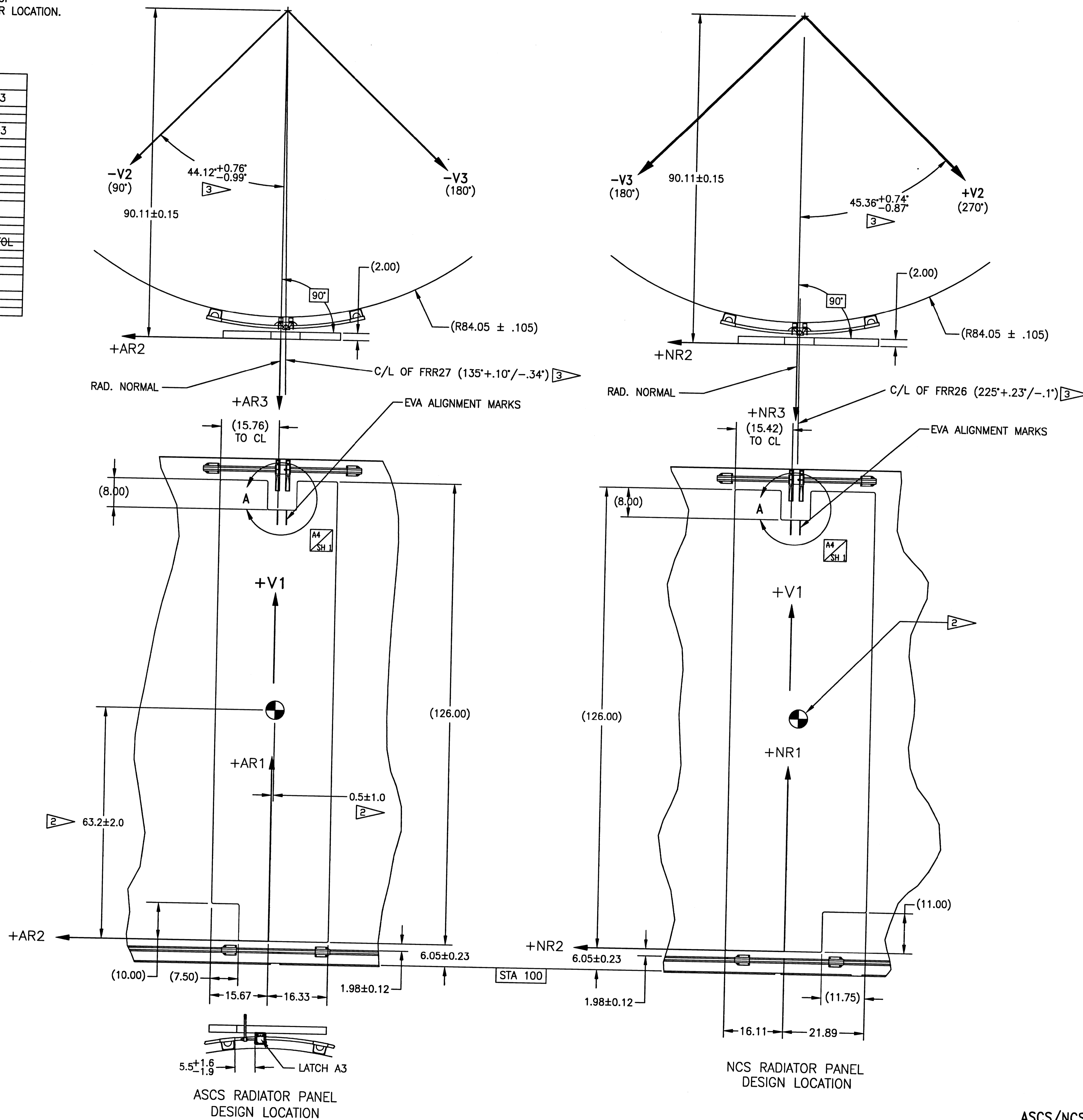


NOTES:

1. THE RADIATOR COORDINATE SYSTEM ORIGINS ARE THE INTERSECTIONS OF THE NORMAL FROM THE V1 AXIS TO THE PANELS WITH THE PANEL FRONT SURFACES AND BOTTOM EDGES.
2. SAI-TM-1997 CONTAINS THE NCS RADIATOR C.G. ENVELOPE. THE ASCS RADIATOR C.G. IS TBR (EXT-1).
3. REF. LM FS&S EM 1514 FOR FRR 26 & 27 LOCATION TOLERANCES. RADIATOR LOCATIONS INCLUDE FRR 26 & 27 TOLERANCES. ANGULAR LOCATIONS AND TOLERANCES APPLY AT BOTH TOP AND BOTTOM OF RADIATORS. SEE SAI-TM-2085 FOR ACTUAL SM3B NCS RADIATOR LOCATION.

TBR LIST

TBR NO.	SHEET	DESCRIPTION	RESOLUTION
EXT-1	1	FINAL ASCS RAD CG LOC.	MASS PROP TEST-2003
EXT-2	1	FRR26 & 27 LOC. TOL.	LM TO VERIFY
EXT-3	2	FINAL ASCS COND CG LOC.	MASS PROP TEST-2003
EXT-4	5	P600/P601 HARNESS VOLUMES FOR MLI COVER	LM TO RESOLVE WITH SA-3 GROUP
EXT-5	6	HST RAIL SPACING	LM TO VERIFY
EXT-6	7	HR LATCH CLSD DIM	SAI TO VERIFY
EXT-7	7	ASCS HR LATCH RANGE	METROLOGY-2003
EXT-8	8	DOOR STOP ENV.	LM TO VERIFY
EXT-9	9,10	DOOR/RAD CLEARANCE	REDUCE BY FRR LOC TOL
EXT-10	9	BAY 3 DOOR/ASCS RAD CLR	PROJECT APPROVAL
EXT-11	9	FINAL BAY 3 DOOR ANGLE	LM DOOR STOP EXT. LOCATION TOLERANCE
EXT-12	9	FINAL +V2 FIRST DOOR ANGLE	EVA/NBL ASSESS-2002



FIGURES APPLY FOR ALL POSSIBLE FRR26/27 LOCATIONS (AS BUILT)
FIGURE 1 - ASCS/NCS RAD TO HST ALIGNMENT REQUIREMENTS

NAME	INIT	DATE
LM - ICD DWG REE	JG	1/10/01
J. GAY		
LM - METROLOGY	JC	1/10/01
J. COOPER		
LM - SYSTEMS	KM	1/10/01
K. MCAVEETY		
LM - MECHANISMS	JP	1/22/01
J. PELLICCIOTTI		
LM - POS BRIAN CLAPP	BRC	1/24/01
S. LEE FOR S. LEE		
LM - EVA	RS	1/24/01
R. SHEFFIELD		
SM HST ENGINEERING	TAK	1/10/01
T. KELLY		
SM HST PROGRAM MGR.	JMK	1/12/01
J. KUNST		
LM HST PROGRAM MGR.	JLK	1/16/01
J. KELLEY		
442 MECH. SYSTEMS MGR.	MA	1/27/01
M. ADAMS		
442 FLT. SYSTEMS MGR.	MT	1/10/01
M. TURCZYK		
442 ASCS/NCS MGR.	DZ	1/10/01
D. ZIMBELMAN		
442 FLT. ASSURANCE MGR.	RAS	1/23/01
R. STICKA		

ASCS/NCS RADIATOR PANEL LOCATIONS

ITEM (REQD/REQD)	PART NO.	DESCRIPTION	MATERIAL	MATERIAL SPEC & NO.
LIST OF MATERIAL				
UNLESS OTHERWISE SPECIFIED-DIMENSIONS ARE IN INCHES				
TOLERANCES:				
FRACTIONS 1/16 1/8 1/4 1/2 3/4 1 1 1/2 2 3 4 5 6 7 8 9 10 11 12 13 14 15 16 17 18 19 20 21 22 23 24 25 26 27 28 29 30 31 32 33 34 35 36 37 38 39 40 41 42 43 44 45 46 47 48 49 50 51 52 53 54 55 56 57 58 59 60 61 62 63 64 65 66 67 68 69 70 71 72 73 74 75 76 77 78 79 80 81 82 83 84 85 86 87 88 89 90 91 92 93 94 95 96 97 98 99 100				
Goddard Space Flight Center GREENBELT, MARYLAND				
DRAWING INTERPRETED PER-OSFO-10973-64-1				
EXTERNAL MECH. I/F HST TO ASCS/NCS				
GE 1525373				
SCALE 1/12 1/16 1/8 1/4 1/2 3/4 1 1 1/2 2 3 4 5 6 7 8 9 10 11 12 13 14 15 16 17 18 19 20 21 22 23 24 25 26 27 28 29 30 31 32 33 34 35 36 37 38 39 40 41 42 43 44 45 46 47 48 49 50 51 52 53 54 55 56 57 58 59 60 61 62 63 64 65 66 67 68 69 70 71 72 73 74 75 76 77 78 79 80 81 82 83 84 85 86 87 88 89 90 91 92 93 94 95 96 97 98 99 100				