

11. HST CONNECTORS J600/J601 ARE BENDIX LJT07RE.
12. APPROX. P600 HARNESS LENGTHS ARE 17 FROM ARUBA BOX TO TETHER AND 62 FROM TETHER TO J600.

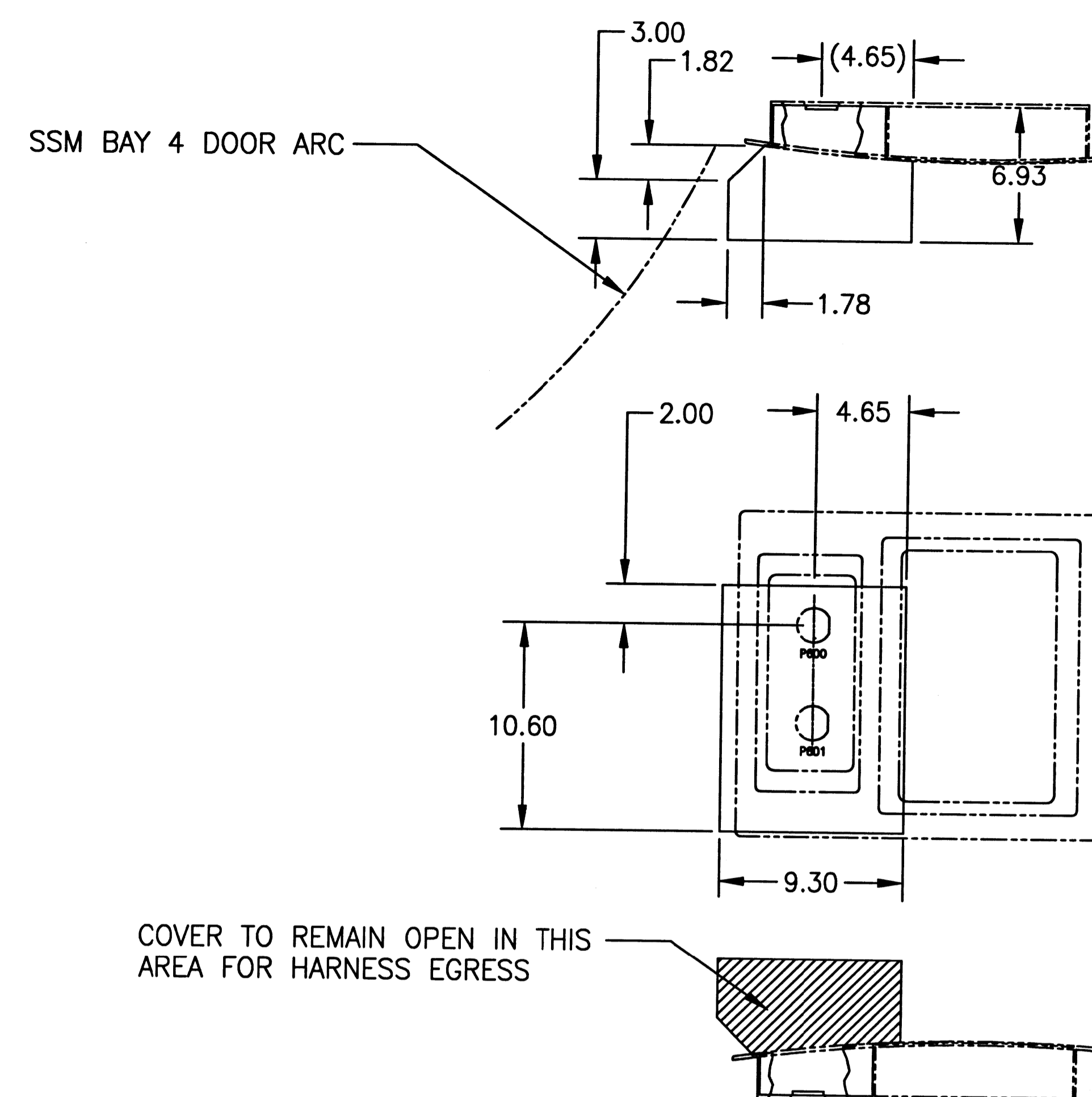
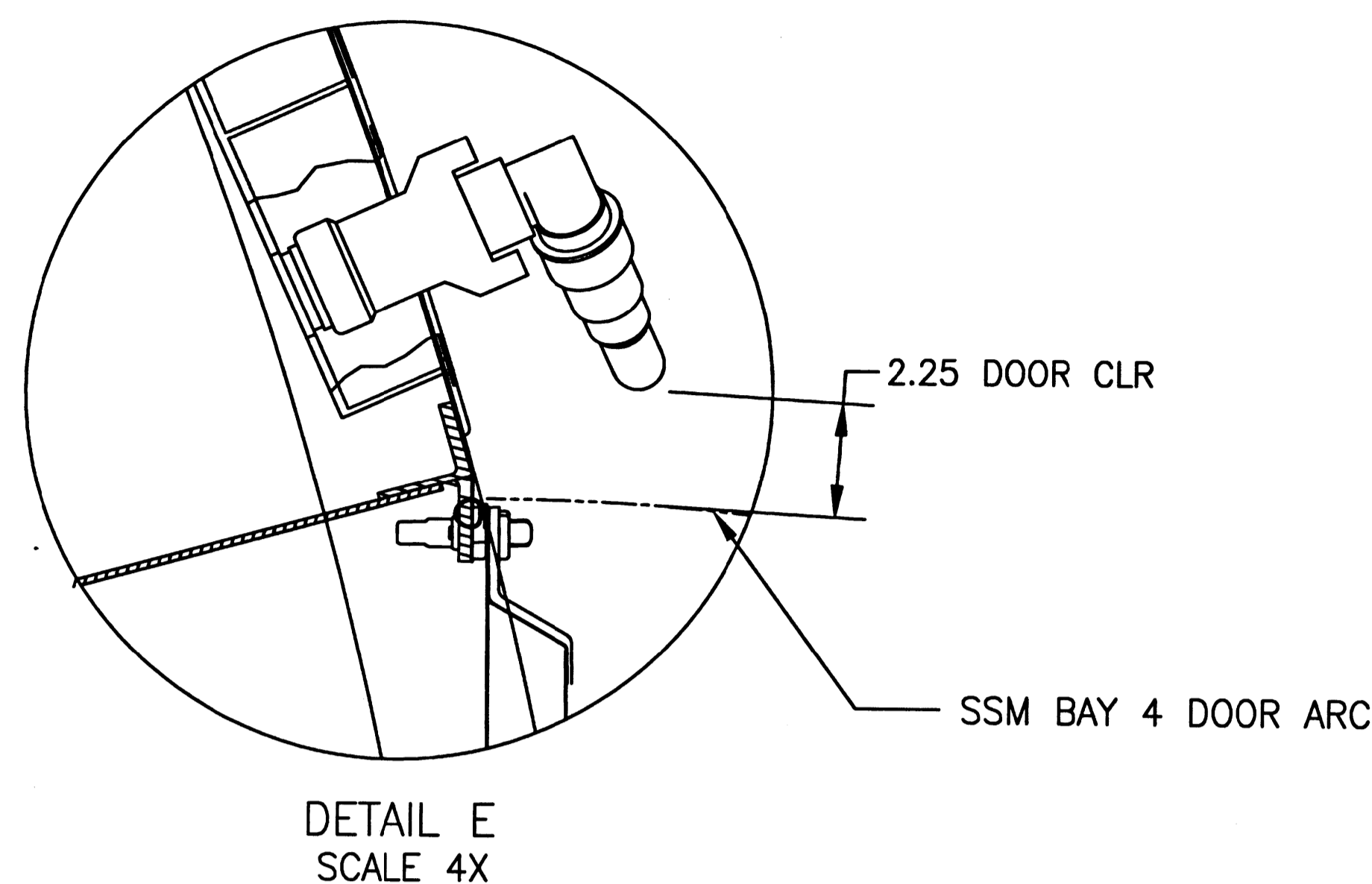
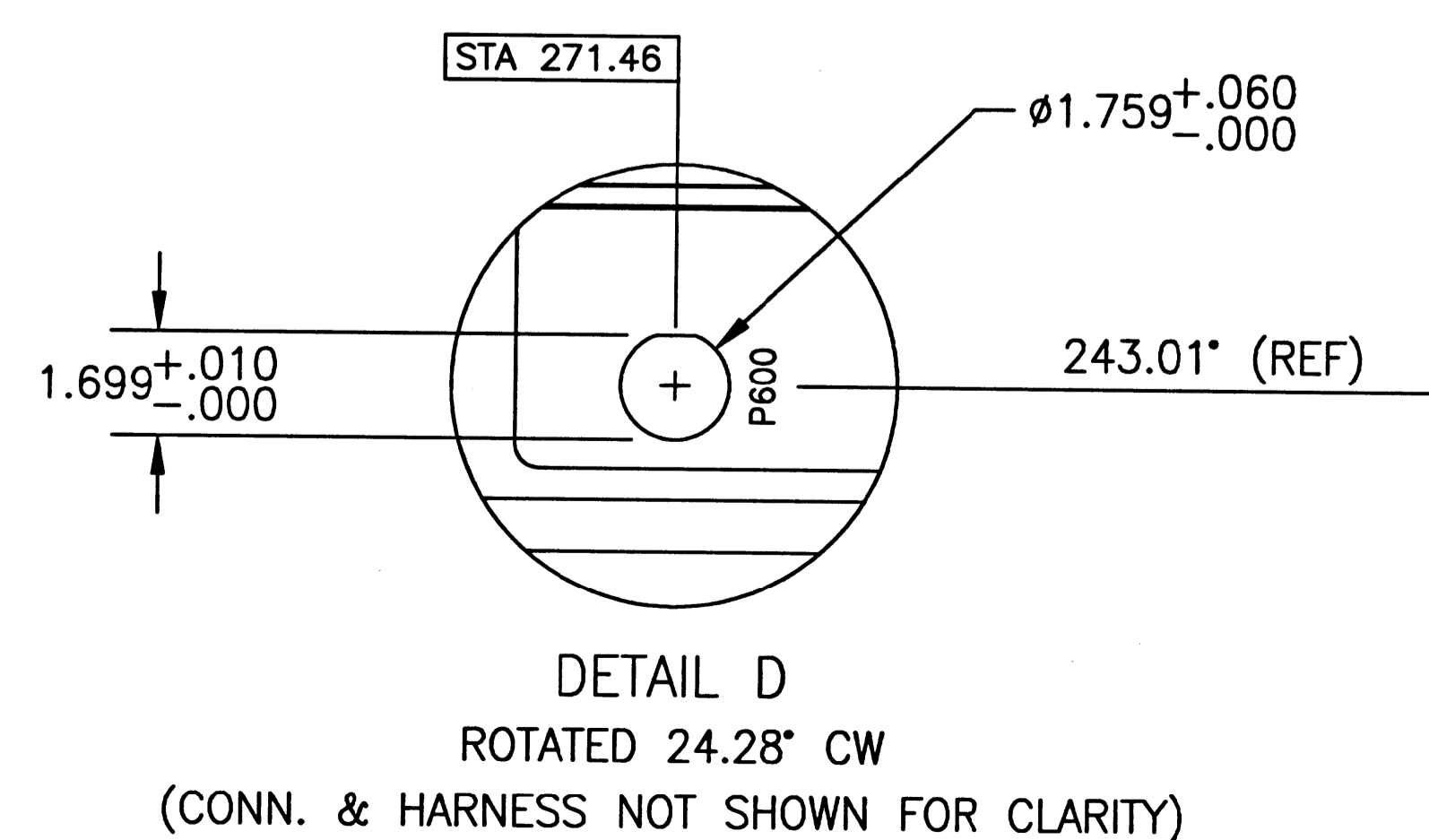
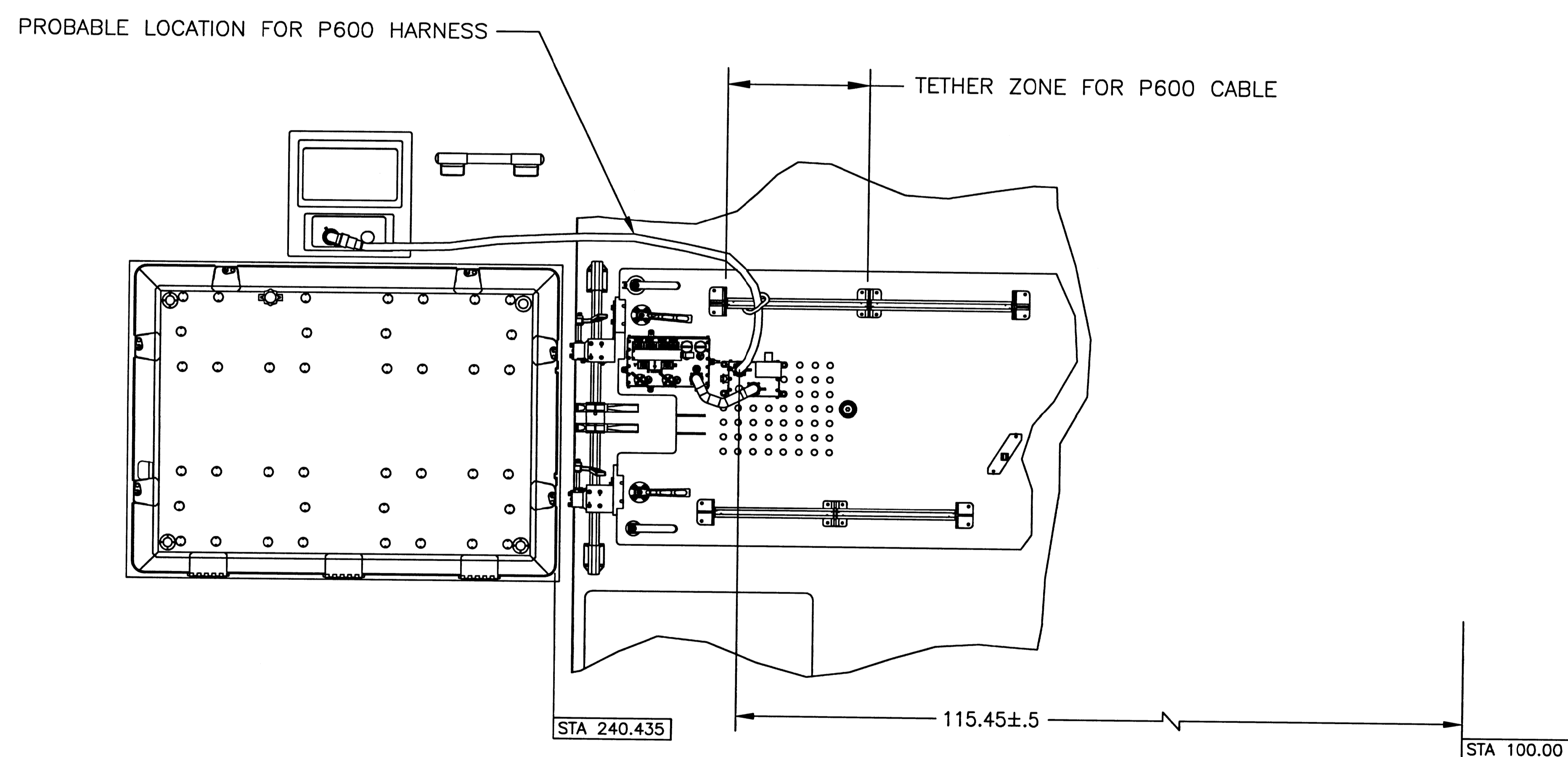
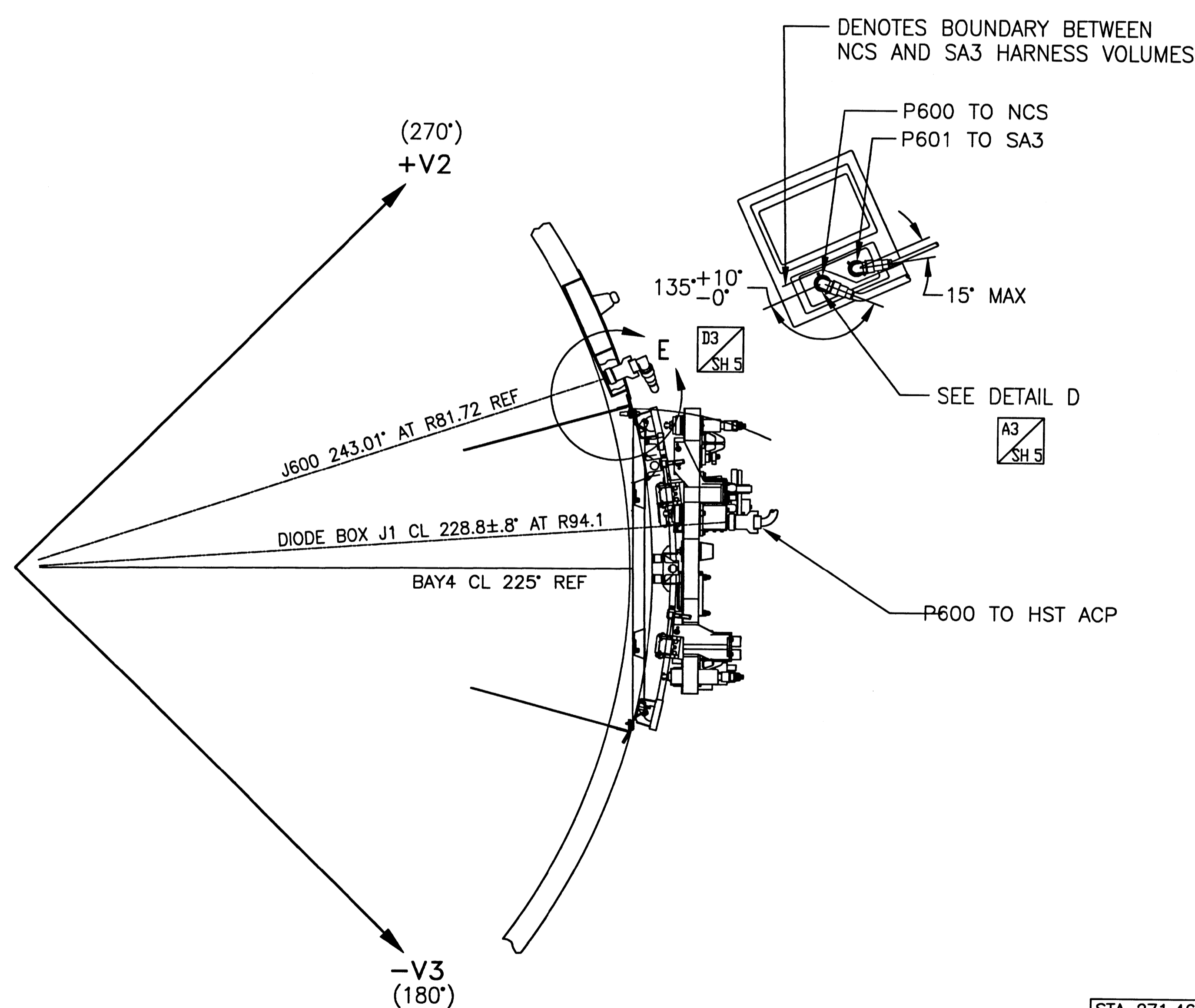


FIGURE 1  
MLI COVER - MIN. INTERIOR VOLUMES  
P600 (NCS) AND P601 (SA3) HARNESSSES  
SCALE 2X



P600 HARNESS INTERFACE DETAILS									
ITEM		REQD	RECD	PART NO.		DESCRIPTION		MATERIAL	MATERIAL SPEC & NO.
NO.		LIST OF MATERIAL							
UNLESS OTHERWISE SPECIFIED-DIMENSIONS ARE IN INCHES						NATIONAL AERONAUTICS AND SPACE ADMINISTRATION			
TOLERANCES:						Goddard Space Flight Center GREENBELT, MARYLAND			
.XX		.XXX		FRACTIONS 1/16		125			
REMOVE ALL BURRS AND SHARP EDGES R .010 OR CHAMFER MAX						DRAWING-INTERPRETED-PER-656F-M673-04-1			
<input type="checkbox"/> FLIGHT HARDWARE <input type="checkbox"/> HARNESS TEST NOT REQUIRED <input type="checkbox"/> NON FLIGHT <input type="checkbox"/> TEST HARNESS PER ASTM E-18, LOCATION OPTIONAL <input type="checkbox"/> TEST HARNESS PER ASTM E-18 WHERE INDICATED ON FIELD OF DRIVING TUBES						TITLE EXTERNAL MECH. I/F HST TO ASCS/NCSS			
<input type="checkbox"/> NO NON-DESTRUCTIVE EXAMINATION (NDE) REQ'D <input type="checkbox"/> NDE REQUIRED PER S-313-008 CODE						GE 1525373 SCALE 1/10 WT SH 5 OF 10			
NEXT ASSY						USED ON			
APPROVED-DESIGNER						APPROVED-ENGINEER			
APPROVED-TESTER						APPROVED-INSPECTOR			